

Griffith Park News & Updates

Hello from The Park Services Office in Griffith

INSIDE THIS ISSUE

Updates from Acting Superintendent, Stefanie Smith	2-5
Flashback	6



WHEN I REMEMBER I SEE RED

American Indian Art and Activism in California

[At the Autry Museum of the Southwest: When I Remember I see Red: American Indian Art and Activism in California](#)

Through Sunday, November 14

Beginning with the occupation of Alcatraz in 1969, California became a beacon of creative freedom, individual expression, and social activism for Native peoples across the country. The region quickly transformed into a place where Native artists engaged with cultural diversity, historical traditions, and contemporary art to critique its colonial past. As a result, California became a site of artistic achievement within the broader of Native art.

This exhibition features Native California artists who have used their work as a means of cultural resistance and renewal. Many have helped-and continue to help-restore aspects of ceremony, dance, language, and material culture once in danger of disappearing. Several facilitate workshops, teaching the next generation, and curate exhibitions consisting of work by their peers. Some of the pieces displayed are explicitly political in content, but in general aim more to reverse erasure and invisibility while reasserting Native values and sovereignty.

Collectively, the artists in this exhibition practice a version of activism that combines elements of traditional and contemporary society to call out racial and social injustice and to heal communities through cultural renewal.

When I remember I see Red was conceived by, and is dedicated to, Nomtipom Wintu artist, Frank LaPena (1936-2019), a renowned art writer, curator, poet, traditionalist, and professor at Sacramento State University for 40 years.

*"Colors are the smiles of nature."
- Leigh Hunt*

Updates from Stefanie Smith, Acting Superintendent of Griffith Region

- **P22 DAY** is scheduled for October 23 in the Park Center area of Griffith Park. It is always a special, family friendly event. See you in the park!
- Thank you to **Councilmember Raman** and staff for their efforts on the Deronda gate repairs. The access point has been left wide open for over two years. CD4 was able to have BOE agree to temporary fencing so the park can be secured at night. There is a pedestrian access gate that will be open sunrise to sunset seven days a week.



Photo by Steve Winter

- **It has been HOT!** Remember to bring plenty of water when embarking on your hike and [don't forget water for your dogs](#). We have had reports of dogs becoming very ill with heatstroke.



- **Griffith Park Advisory Board (GPABP)** – The next meeting is scheduled for September 23, 2021 at 6:30 pm via Zoom. Agenda is [posted here](#) 72 hours prior to scheduled meetings. The public is always welcome to join.

- **Bronson Caves** are closed due to falling rocks/safety.

- **COVID** – Face masks are required in all park facilities.

- **Griffith Park is 125!** Big plans underway for Griffith Park's 125th. The Los Angeles Conservancy and Recreation and Parks are partnering to make

this a terrific event. Hold the date: November 13, 2021. Full details are still coming together and will be revealed in next month's newsletter.

- **The Haunted Hayride** is back for another season. This year it will be held in Crystal Springs from September 25th – October 31st. The picnic area will remain **open to the public** until 5:00 pm. The trail that runs along the 5 freeway and Crystal Springs will remain open for hikers and runners, but it is recommended that with new activity going on in this area that equestrians may want to avoid if their horses are easily spooked. There will be signage to alert riders of the trail closure, just to be safe.

- Check out this art project that honors the history and legacy of the Tongva, the native people who lived here in Griffith Park and throughout the Los Angeles area before the Europeans arrived. #TONGVALAND consists of seven billboards that will be up throughout the month of August, incorporating fine artwork photography, digital composites and paintings.
- The Los Angeles Zoo and Recreation and Parks Learning Engagement Partnership – We have come a long way in animal care and conservation. The Los Angeles Zoo is known as a world class zoo with heavy focus on biodiversity, education and animal care. There are many interesting events being scheduled to engage the community. [Check out their webpage](#) for upcoming programs.



Photo by Eastsider



- **RUN, WALK and ROLL**, The annual fundraiser took place on Saturday, September 12 at Shane’s Inspiration Playground, the first playground of its kind for kids of all abilities to play. Funds raised will help foster social inclusion for children with disabilities through inclusive playgrounds and educational programs that unite children of all abilities worldwide.

Bottom: Photo of Mike Shull, Recreation and Parks General Manager

- The Breakfast Club:** “For over 90 years, the Los Angeles Breakfast Club has been gathering to enjoy mornings among friends. Whether making new contacts of actively supporting good works in the community, its members have come from all walks of life to share a meal and friendship. What started as a men’s riding group has evolved into an open membership of business and professional people as well as active retirees – people who enjoy their community and are enthusiastic about living here. The Club hosts weekly speakers on topics covering your community through the [Breakfast Club Foundation](#) or through hands-on work with any of the organizations work we highlight. It’s a great way to become a more informed, effective member of your community, and as we say each Wednesday morning, *“to get better acquainted and start your day off right!”*”



About the Program

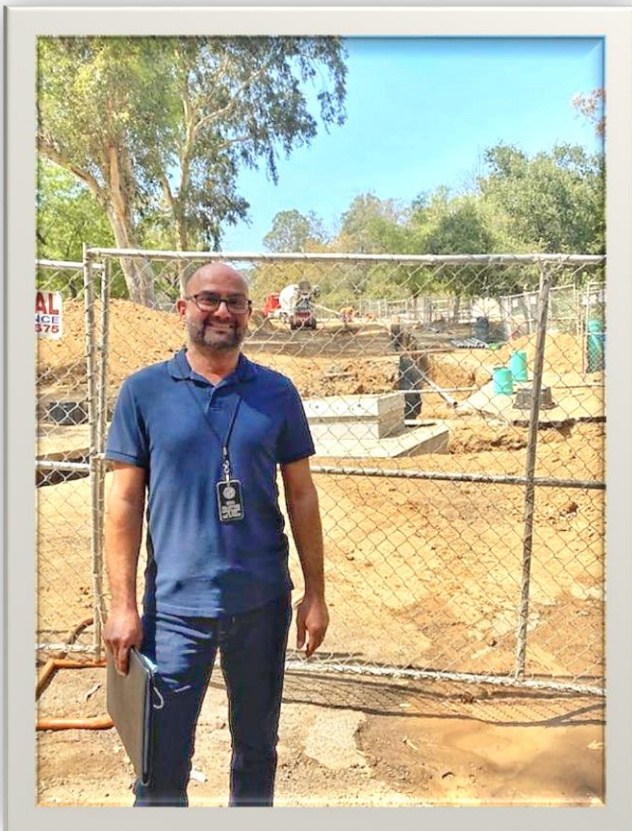
Buffet breakfast is served at 7:00 am followed by a short meeting, guest speaker and professional entertainment. The meeting concludes at 9:00 am



- Highlighting Great People in the Park:** Rex Link has a movie star name and *is* a star of the Griffith Park community. For decades, Rex has been an advocate for Griffith Park. Rex is a member of the Los Angeles Breakfast Club, Friends of Griffith Park, Sierra Club – Angeles Chapter and U.S. Merchant Marine Veterans WWII. His service record includes Lt. USNR, Ret., 2nd Mate License, US Coast Guard Expired, Deck Cadet, Deck Officer and U.S. Merchant Vessels, WWII, Korea and Viet Nam. His occupation is parking consultant and his expertise has guided us on many successful projects in the park. We recognize

him here for his service to our Country, his service to the City of Los Angeles and thank him for being a true friend of Griffith Park!

- Independent Shakespeare Co. (ISC)** concluded their 11th season of free to the public Shakespeare in Griffith Park. The setting was glorious and the show, *The Tempest*, was outstanding. On the night we attended we were joined by several members of the **Los Feliz Neighborhood Council** including **President Jon Deutsch** as well as our Councilmember, **Nithya Raman** and her family. Next year **ISC** will finally get to perform on the Griffith Park Performing Arts Stage. Construction has already begun, and a portion of the Old Zoo area is currently closed to the public while LADWP lays wires underground.



- HIGHLIGHTING STAFF: Aren Galustians!**
 Architectural Associate II for the City of Los Angeles, Department of Recreation and Parks Planning, Construction, and Maintenance Branch. He has worked for the department for 15 years. He is pictured here at the construction site at the Old Zoo. Aren is the person behind many park projects, including playground renovation at Fern Dell and Riverside playground, ADA restroom renovation at Fern Dell, the wonderful walking path from the Greek Theatre to the Observatory, the outdoor fitness equipment on Crystal Springs Drive, the upcoming Tom LaBonge Panorama and the new Griffith Park Performing Arts Stage to name a few. Our Planning division is incredibly busy with projects in all of our city parks, and they make great things happen!

- Do you love Griffith Park? Consider becoming a member of [The Friends of Griffith Park](#). Lots of volunteer and educational opportunities. The Friends of Griffith Park and CD4 are working together on 'Tom LaBonge Day of Service', volunteer event in Fern Dell on October 9, 2021. FoGP Raptor Study results are back too!

Stefanie Smith, Acting
Superintendent
stefanie.smith@lacity.org

Sean Hinton, Park
Services Supervisor
sean.hinton@lacity.org

Tracy James, all
general inquiries,
add/remove name from
newsletter
tracy.james@lacity.org

Park Rangers
(323) 644-6661



Follow the Park
Rangers on social
media:

IG: [@lacityparkrangers](https://www.instagram.com/lacityparkrangers)

Twitter: [@lacityrangers](https://twitter.com/lacityrangers)

FB: [City of Los Angeles
Park Rangers](https://www.facebook.com/CityofLosAngelesParkRangers)



FLASHBACK!

Griffith Park Boys Camp – Opened in 1925



No smoking in the Park! Fines up to \$1,000.00